

JUNCTION

TURN-KEY FINANCIAL INSTITUTION
FOR LEASE | DOWNTOWN BOTHELL



JUNCTION | RETAIL

9924 NE 185TH STREET #104 - BOTHELL, WA

JUNCTION BOTHELL

Located in Downtown Bothell this dynamic mixed-use development, has been establishing itself as a premier destination for retail, dining, and entertainment since it opened. This site benefits from its strategic adjacency to McMenemy's flagship hotel and brewery, a comprehensive venue encompassing 72 guest rooms, a cinema, live music hall, and event facilities. The development integrates 130 upscale residential units atop meticulously designed ground-level retail spaces. These retail environments feature elevated ceiling heights, abundant natural illumination, designated outdoor seating areas, and dedicated parking, all fostering an optimal commercial atmosphere. Moreover, select retail tenants are afforded exclusive rooftop access, offering unique opportunities for enhanced customer engagement. The First Financial NW Bank space is now available. Contact agents for details.



OVERVIEW

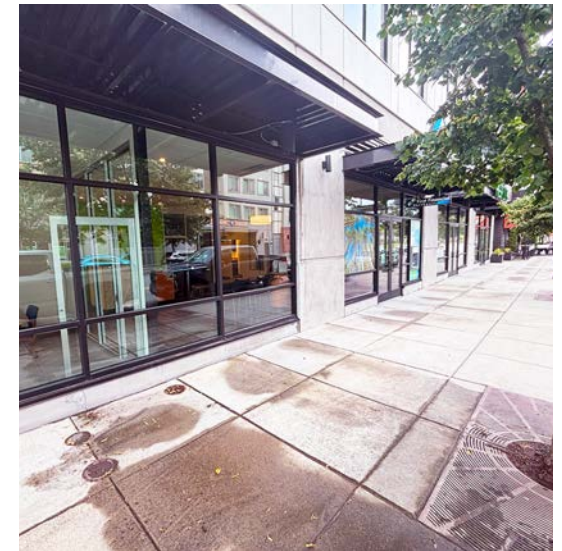
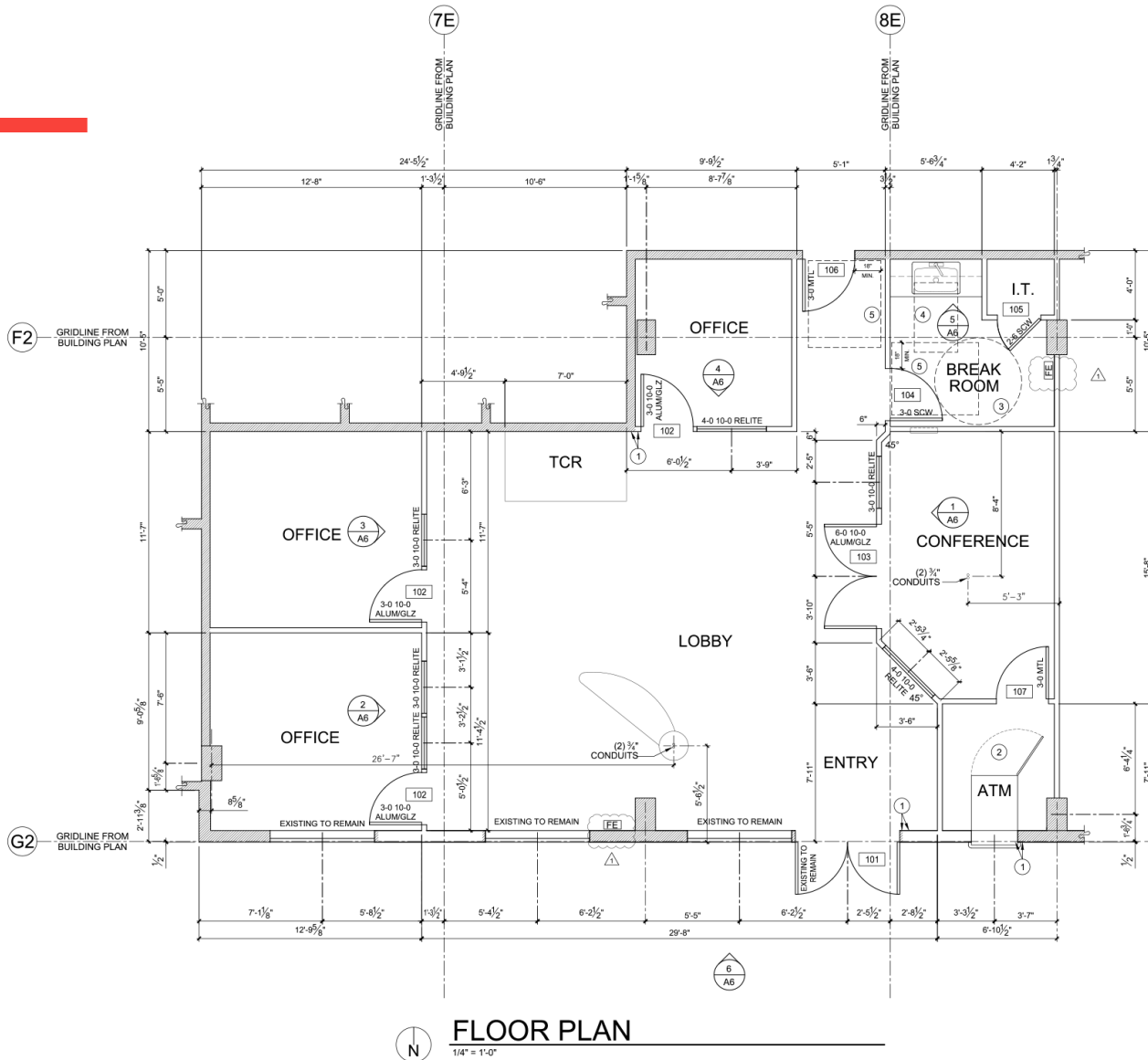
CURRENT FIRST FINANCIAL NW BANK SPACE

Address	9924 NE 185th Street, #104 - Bothell, WA
Space Size	1,402 SF
Rate	\$45.00 - \$50.00 PSF + \$10.87 PSF NNN
Layout	Lobby, Conference & Breakrooms. Offices (3)
Residential Units	130
Join	Poquitos, Fresh Cuts, Bay Leaf, Optum, & Pelicana Chicken is Coming Soon!

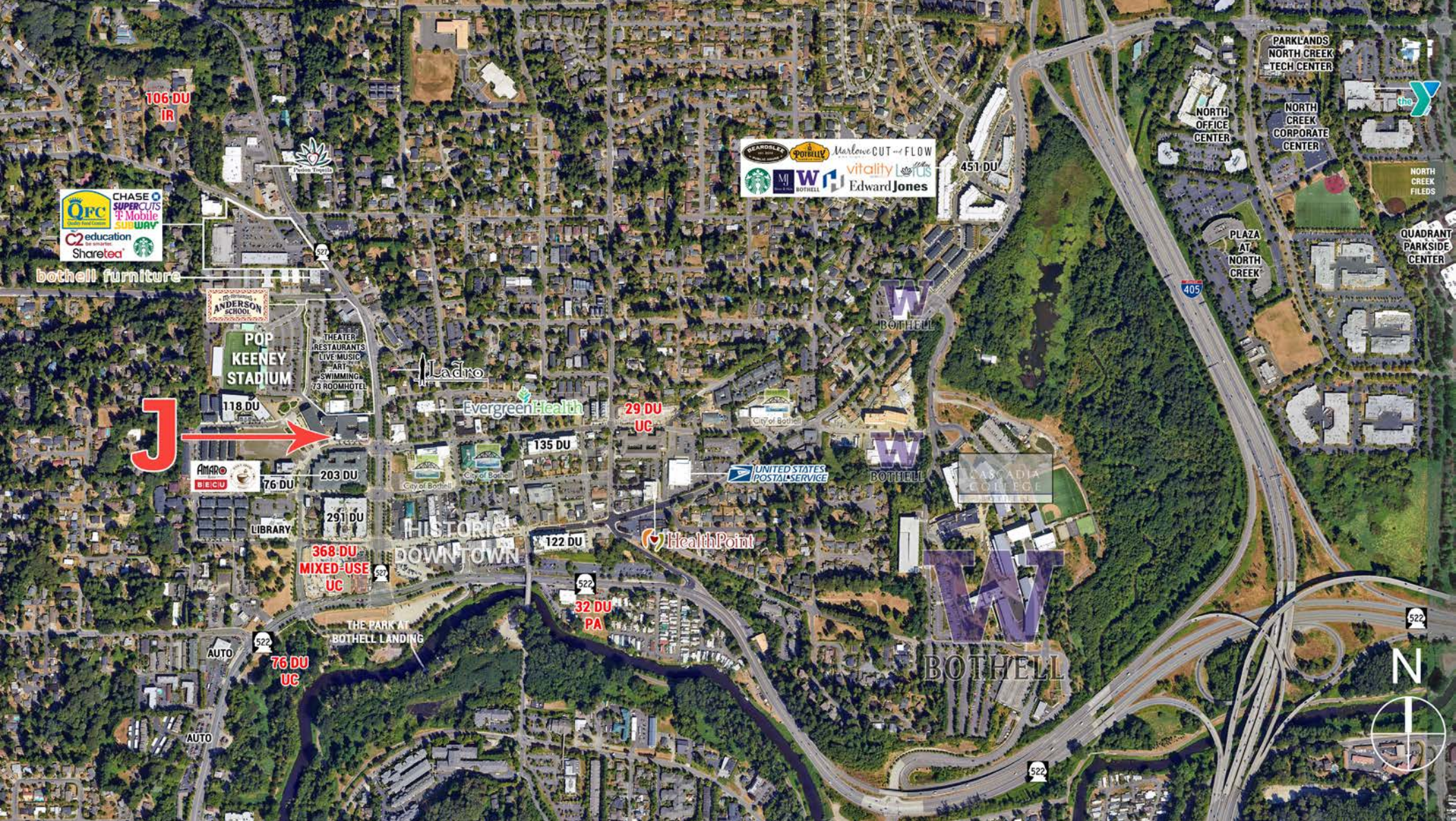


SITE MAP

RETAIL | 1,402 SF - AS BUILT



DOWNTOWN BOTHELL HIGHLIGHTS



JUNCTION

THE JUNCTION | RETAIL

BRAND STORY

AT THE JUNCTION OF DOWNTOWN

Centrally located in the emerging Downtown Bothell Landing neighborhood, the Junction puts you in the center of it all. Steps from retail, dining, entertainment and recreation right outside your door.

The Junction is located in the heart of this redevelopment effort along Bothell Way and is adjacent to the redeveloped historic McMenamins Anderson School, which features restaurants and outdoor dining, a movie theater, live music, a large indoor swimming pool and shopping. The six-story, mixed-use community includes 10,000 sq. ft. of ground level retail, 130 apartment homes and 30,000 sq. ft. of Class A commercial office space.



JUNCTION

THE JUNCTION | RETAIL

INQUIRE

ANGELA OLIVERI

(206) 853-1330
aoliveri@fwp-inc.com

TEJ ASHER

(425) 320-8834
tasher@fwp-inc.com

SEBASTIAN CAMACHO

(510) 333-0624
sebastian@fwp-inc.com

ANTONIO OLIVERI

(425) 229-2563
antonio@fwp-inc.com



Graphics for illustration purposes only and all dimensions are approximate. Photographs, renderings, and floor plans are for representational purposes only and may not reflect the exact features or dimensions.

Prospective tenants or buyers should consult their professional advisors and conduct their own independent investigation. Properties are subject to change in price and/or availability without notice.

JUNCTION | RETAIL

9924 NE 185TH STREET #104 - BOTHELL, WA