



4,134 SF OF COMMERCIAL SPACE AVAILABLE IN DOWNTOWN ITASCA

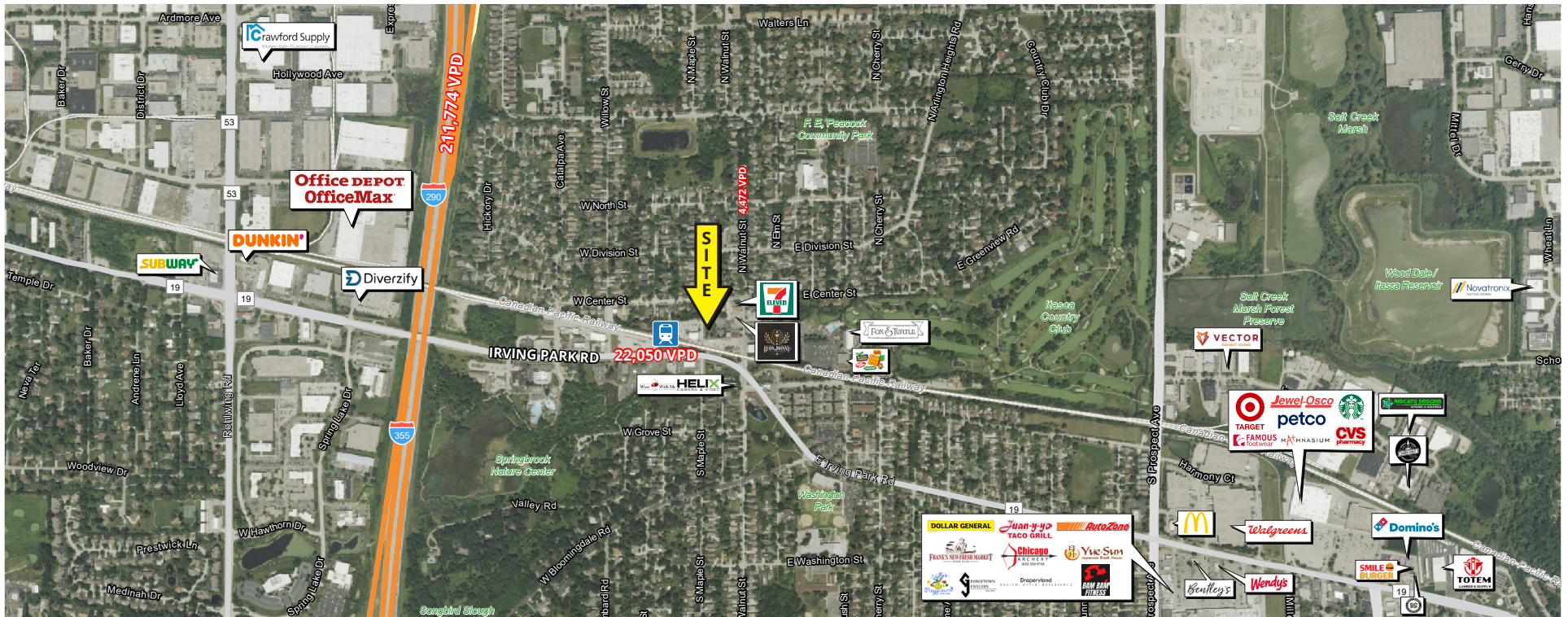
ITASCA STATION

125 W ORCHARD ST, ITASCA, IL

FOR LEASE

CONTACT: HANNAH PERL hperl@metrocre.com 847.849.1026 // **JONATHAN HYMAN** jhyman@metrocre.com 224.365.8144





PROPERTY HIGHLIGHTS

- 4,134 SF New Construction Retail
- Base of 87 Unit **New Construction** Luxury Residential Building
- Steps from Lisle Metra Station (2,600 Avg Daily Ridership)
- **Seeking Restaurant/Café User**
- Easy to Install Black Iron
- Significant Tenant Improvement Dollars Available*
- Large Outdoor Patio (56 Seats)

*Subject to qualifications

NEAR-BY AREA RETAILERS



DEMOGRAPHICS

	1 MILE	3 MILES	5 MILES
TOTAL POPULATION	7,006	80,903	210,062
DAYTIME POPULATION	17,166	113,613	287,085
HOUSEHOLDS	2,615	31,606	79,212
AVG HH INCOME	\$171,561	\$132,198	\$128,899

TRAFFIC COUNTS

IRVING PARK RD	22,050 VPD
WALNUT ST	4,472 VPD

ITASCA STATION

125 W ORCHARD ST, ITASCA, IL

AERIAL



CONTACT
INFORMATION:

HANNAH PERL
hperl@metrocre.com
847.849.1026

JONATHAN HYMAN
jhyman@metrocre.com
224.365.8144

DEVELOPMENT BY:
 **HOLLADAY
PROPERTIES**

56 Skokie Valley Road
Highland Park, Illinois 60035
www.MetroCRE.com

 **METRO**
COMMERCIAL REAL ESTATE

