



THE ARNOLD BUILDING - RETAIL SPACES

333 E ENGLISH, WICHITA, KS 67202



GROSS BLDG SF: 27,961 SF
VACANT SF: 3,362 SF
YEAR BUILT: 1910, Renovated 2025
ZONING: Central Business District
DEVELOPMENT STATUS: Under Construction

DEMOGRAPHICS	1 Mile	3 Miles	5 Miles
Population	11,583	110,971	231,336
Avg. HH Income	\$56,359	\$63,151	\$69,683
Median Age	32.4	33.4	33.4

TRAFFIC COUNTS	
English & Broadway	10,639 VPD

PROPERTY HIGHLIGHTS

- New retail spaces for lease in the historic Arnold Building in Downtown Wichita.
- Ideal space for retail, service-oriented users, and restaurants.
- 42 Class-A apartments in Floors 2-4; one bedroom and studio units ready for occupancy in December 2025.
- Private parking lot for commercial tenants behind the building.
- Directly across from the under-construction Wichita BioMedical Campus.

FOR LEASE: \$28.00/SF, NNN

SUITE B: 1,602 SF

SUITE C: 1,760 SF

EST. NNN's: \$4.00/SF



ReeceNichols
SOUTH CENTRAL KANSAS

An Independently Owned and Operated Member of the Reece & Nichols Alliance, Inc.

Offered By: **Alex Ibarra, CCIM** | 316-833-1198 | alexibarra@reecenichols.com



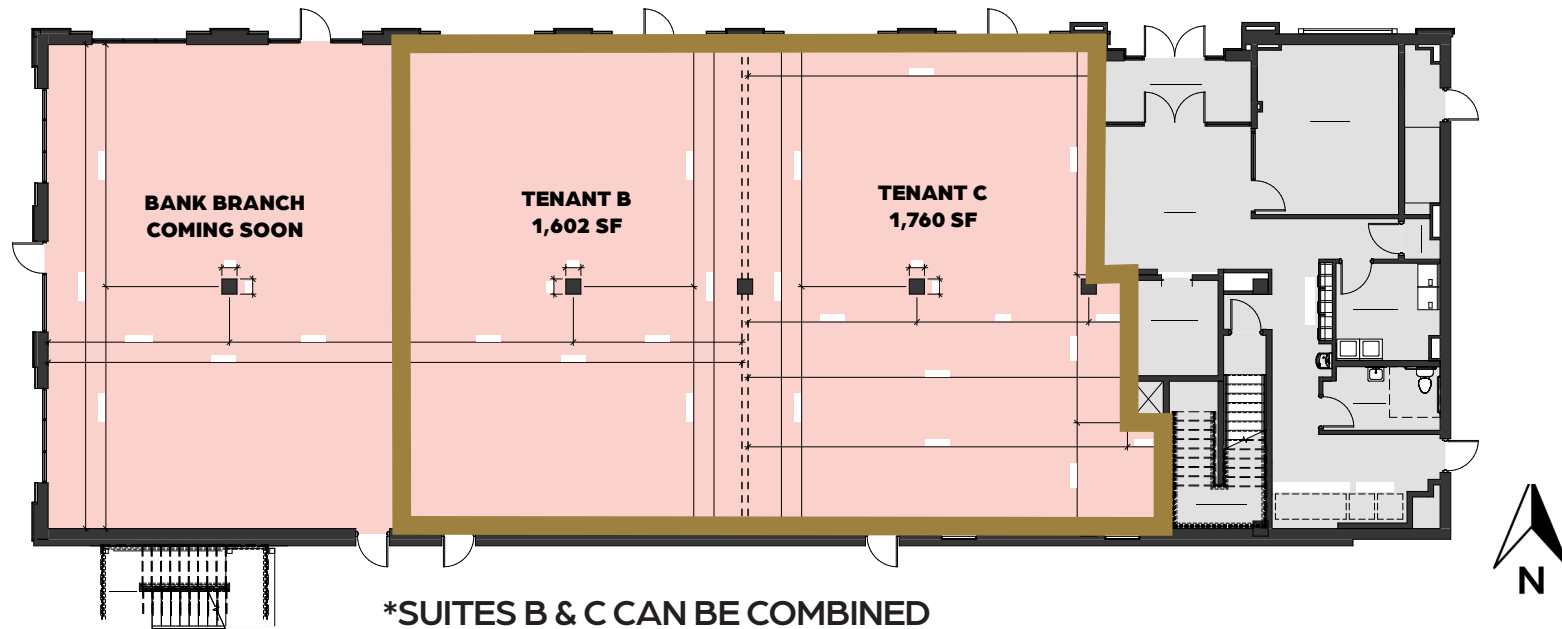
THE ARNOLD BUILDING - RETAIL SPACES

333 E ENGLISH, WICHITA, KS 67202



RENDERINGS

FLOOR PLAN



ReeceNichols
SOUTH CENTRAL KANSAS

An Independently Owned and Operated Member of the Reece & Nichols Alliance, Inc.

Offered By: Alex Ibarra, CCIM | 316-833-1198 | alexibarra@reecenichols.com



THE ARNOLD BUILDING - RETAIL SPACES

333 E ENGLISH, WICHITA, KS 67202

WICHITA BIOMEDICAL CAMPUS



ABOUT

- Wichita State University, WSU Tech and the University of Kansas have broken ground on the Wichita Biomedical CampusSM, an approximately 471,000-square-foot, \$300 million health sciences facility located in the heart of downtown Wichita.
- The 471,000-square-foot building will be comprised of shared spaces for advanced laboratories, clinical research and technology. The high-tech facility will draw students, educators and researchers from around the country – attracting talent and resources to the Wichita area and boosting the economic success of Kansas.
- Initially, about **3,000 students and 200 faculty and staff** will be housed at the center with opportunities for growth in existing and new programs.
- **Estimated completion: Q4-2026. Classes start: Q2-2027.**



ReeceNichols
SOUTH CENTRAL KANSAS

An Independently Owned and Operated Member of the Reece & Nichols Alliance, Inc.

Offered By: **Alex Ibarra, CCIM** | 316-833-1198 | alexibarra@reecenichols.com



THE ARNOLD BUILDING - RETAIL SPACES

333 E ENGLISH, WICHITA, KS 67202



ReeceNichols
 SOUTH CENTRAL KANSAS

An Independently Owned and Operated Member of the Reece & Nichols Alliance, Inc.

Offered By: Alex Ibarra, CCIM | 316-833-1198 | alexibarra@reecenichols.com